

DELTA CARDINAL

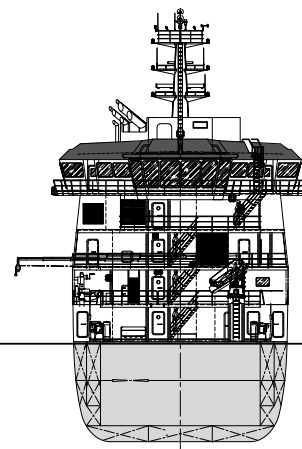
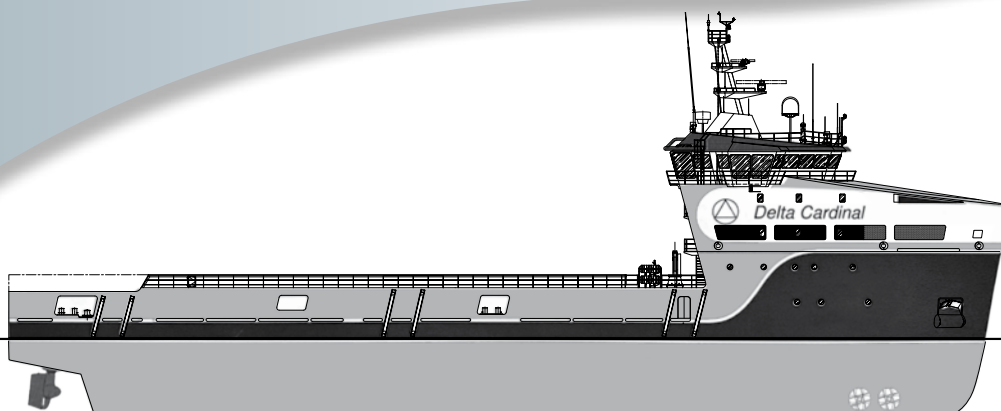


DELTA LOGISTICS LTD.
MARINE CONTRACTORS

- ✘ ABS A1
- ✘ OFFSHORE SUPPORT VESSEL
- > AMS
- > ACCU
- > DPS-2



DELTA CARDINAL



REGISTRY

Owner	Delta Logistics Limited	
IMO Number	9653111	
Call Sign	J8QU5	
Flag	St. Vincent & Grenadines	
Country of construction	Romania	
Shipyard	Damen Shipyard	
Year built	February 2014	
Classification	ABS DP2 Offshore Service Vessel	

DIMENSIONS

Length Overall	80.10 m	262.7 ft
Moulded Beam	16.2 m	53.1 ft
Moulded Depth	7.50 m	24.6 ft
Deadweight	3496 T	
Gross Tonnage	3832	

CAPACITIES

Electronic Loading Software	Loco Pias	
Drill Water	1462 m ³	210,545 usg
Fresh Water	647 m ³	39,626 usg
Fuel Oil	945 m ³	158,503 usg
Liquid Mud/Brine	1,232 m ³	170,919 usg
Dry Bulk	262 m ³	8,000 ft ³
Clear Deck Area	667 m ²	6,000 m ²
Deck Cargo	3,335 Tons	
Deck Strength	5.0 T/m ²	1,025 lbs/ft ²
Tuggers	2 x 5 Ton	

MACHINERY/PROPULSION

Total Installed Power	6515 HP (4858 KW)	
Main Generators	2 x 1261 HP (940KW)	and 2 x 1837 HP (1370KW)
Emergency Generator	1 x 319 HP (238 KW)	
Main Propulsion	Azimuth - 2 x 2011 HP (1500 KW)	
Bow Thrusters	Tunnel - 2 x 986 HP (735 KW)	
Max Corrected Speed	13.5 Knots	
Cruising Speed	12 Knots	
Economical Speed	10 Knots	

DELIVERY RATES

Fuel Oil	150 m ³ /hr @ 10 bar
Drill Water	151 m ³ /hr @ 9 bar
Liquid Mud/Brine	100 m ³ /hr
Dry Bulk	75 T/hr @ elevation of 80 m

ACCOMMODATION

Total Compliment	22 persons
Single Cabins	16
Double Cabins	3
Dedicated Client Offices	2
Exercise Room	1
Internet	Wi-Fi available in Accommodation
Television	Satellite Television

DYNAMIC POSITIONING

DP System Class 2	Marine Technologies LLC Bridge Mate
Independent Joystick	
3 Gyro Compasses	
3 Vertical Reference Units	
2 Wind Sensors	
2 DGPS	
1 Cyscan Reference Unit	

COMMUNICATION/ELECTRONIC EQUIPMENT

2 Immarsat-C Satellite Communication Systems
Immarsat F33 Satellite Communication System
3 x GMDSS Portable Radios
2 x SART Radar Transponders
Daylight Signalling Light
V-Sat Antenna
Talkback station with horn speaker on Cargo Deck Aft
Talkback station with horn speaker at Muster Station
Navtex
AIS
DGPS for navigation purposes
Speed log
ECDIS

SAFETY & DECK EQUIPMENT

Rescue Boat	NARWHAL SV-420
-------------	----------------

This document is based on specifications at time of manufacture and may change without notice. Exact capacities, deadweight cargo capacity and other relevant figures may vary upon delivery of vessel.